

K series rotary controller +T series wireless remote control (RF Remot Optinal)



CE FC RoHS (FCC ID: 2APBAT1)

Technical Specs:

K1: Dim Panel

- Input Voltage : DC12V-24V
- Load Current : 4A*3CH MAX 12A
- Optional output frequency : 0.5K, 1K, 2K, 4K, 8K
- Grey Scale Level : 2048 Levels*3
- Dimming Range : 1%-100%
- Max Output Power : 144W(12V)/288W(24V)
- Working Temperature : -20°C ~ 55°C
- Dimensions : L86*W86*H50 (mm)
- Weight(N.W) : 130g

K3: RGB Panel

- Input Voltage : DC12V-24V
- Load Current : 4A*3CH MAX 12A
- Optional output frequency : 0.5K, 1K, 2K, 4K, 8K
- Grey Scale Level : 2048 Levels*3
- Max Output Power : 144W(12V)/288W(24V)
- Working Temperature : -20°C ~ 55°C
- Dimensions : L86*W86*H50 (mm)
- Weight(N.W) : 130g

K2: CCT Panel

- Input Voltage : DC12V-24V
- Load Current : 4A*2CH MAX 8A
- Optional output frequency : 0.5K, 1K, 2K, 4K, 8K
- Grey Scale Level : 2048 Levels*2
- Max Output Power : 96W(12V)/192W(24V)
- Working Temperature : -20°C ~ 55°C
- Dimensions : L86*W86*H50 (mm)
- Weight(N.W) : 130g

Wireless Remote(T1/T2/T3)

- Input Voltage : 3V(CR2032)
- Working Frequency : 433.92MHZ
- Remote Distance : 30M
- Working Temperature : -20°C ~ 55°C
- Dimensions : L106*W56*H9(mm)
- Weight(N.W) : 40g

— 1 —

K2: CCT Panel



- ※ Short press: turn on/off LED controller
- ※ Long press: in the state of power on , long press to select the output frequency , F0.5=0.5K, F1.0=1.0K, F2.0=2.0K, F4.0=4.0K, F8.0=8.0K.
- ※ Double-click: switch between CCT mode and Dimming mode.
- ※ Adjust rotary: in dimming mode, increase or decrease brightness, range from 1~100; in CCT mode, adjust the color temperature, range from C0-C32.

K3: RGB Panel



- ※ Short press: turn on/off LED controller
- ※ Long press: in the state of power on , long press to select the output frequency , F0.5=0.5K, F1.0=1.0K, F2.0=2.0K, F4.0=4.0K, F8.0=8.0K.
- ※ Double-click: switch between RGB mode and Dimming mode.
- ※ Adjust rotary: in dimming mode, increase or decrease brightness, range from 1~100; in RGB mode, adjust the RGB color, range from C01-C64.

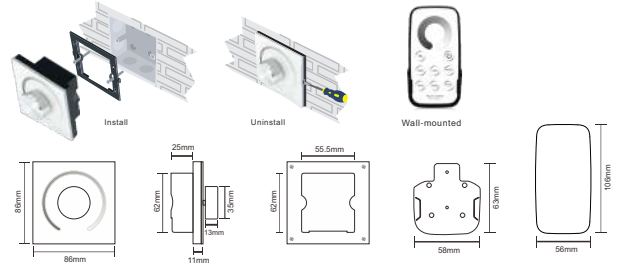
K3 dynamic mode: (call out the dynamic mode only by T3 remote control)

NO.	MODE	NO.	MODE
1	RGB CHANGE	2	COLOR CHANGE
3	WHITE FLASH	4	RGB FADE
5	COLOR FADE	6	RG FADE
7	RB FADE	8	GB FADE
9	WHITE FADE	10	ALL MODE CYCLE

- Notice:**
1. The digital tube is inactive if no settings are made after 1 minute, does not affect the output effect. re-operate the rotary to turn it on.
 2. Restore factory defaults: In the state of power off, long press the rotary and power on, after 0.5 second, release the rotary, the controller is on. after restoring factory defaults, the K series controller and the remote need to rematch the ID.

— 3 —

Installation:



Rotary Functions:

The Learning ID Method of Remote Control:

Remote control has been matched to the receiver before delivery, if deleted accidentally, you can learn ID as follow. Learning ID: In the state of power off, long press rotary for 3 seconds, when the digital tube displays 'FF', then press any key on the remote control. The digital tube flashes 3 times, and the controller is ON, the remote and controller is matched.

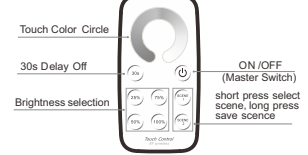
Note:

The controller only matches to the same type remote control, for example: K1 only can be matched with T1, not with T2 or T3; the controller is inactive if no settings are made to it after 1 minute, press any key to turn it on before normal operation.

K1: Dim Panel



T1: Dimming



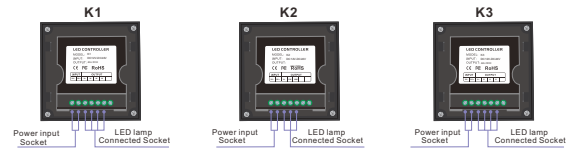
- ※ Short press: turn on/off LED controller

- ※ Long press: In the state of power on , long press to select the output frequency , F0.5=0.5K, F1.0=1.0K, F2.0=2.0K, F4.0=4.0K, F8.0=8.0K.

- ※ Adjust rotary: increase or decrease brightness, range from 1~100.

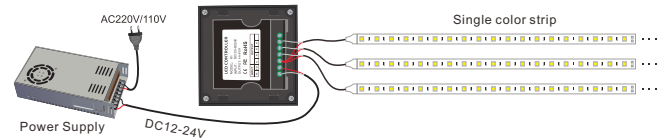
— 2 —

Green Block:

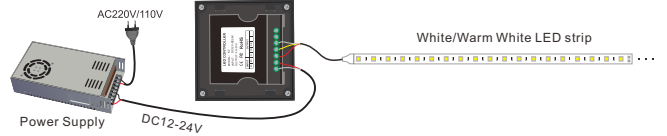


Wiring Diagram:

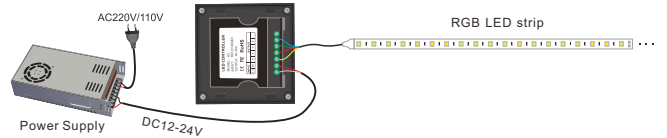
K1 Wiring Diagram:



K2 Wiring Diagram:



K3 Wiring Diagram:



— 4 —