

K Series Rotary Controller



Technical Specs:

K1: Dim Panel

- Input Voltage : DC12V-24V
- Load Current : 4A*3CH MAX 12A
- Optional output frequency : 0.5K, 1K, 2K, 4K, 8K
- Grey Scale Level : 2048 Levels*3
- Dimming Range : 1%-100%
- Max Output Power : 144W(12V)/288W(24V)
- Working Temperature : -20°C ~ 55°C
- Dimensions : L86*W86*H50 (mm)
- Weight(N.W) : 130g

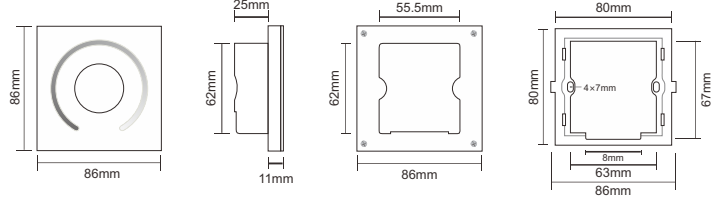
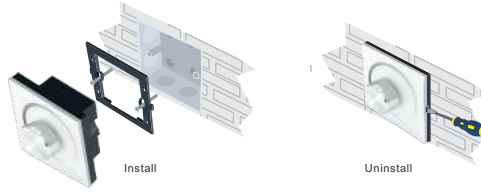
K2: CCT Panel

- Input Voltage : DC12V-24V
- Load Current : 4A*2CH MAX 8A
- Optional output frequency : 0.5K, 1K, 2K, 4K, 8K
- Grey Scale Level : 2048 Levels*2
- Max Output Power : 96W(12V)/192W(24V)
- Working Temperature : -20°C ~ 55°C
- Dimensions : L86*W86*H50 (mm)
- Weight(N.W) : 130g

K3: RGB Panel

- Input Voltage : DC12V-24V
- Load Current : 4A*3CH MAX 12A
- Optional output frequency : 0.5K, 1K, 2K, 4K, 8K
- Grey Scale Level : 2048 Levels*3
- Max Output Power : 144W(12V)/288W(24V)
- Working Temperature : -20°C ~ 55°C
- Dimensions : L86*W86*H50 (mm)
- Weight(N.W) : 130g

Installation:



Rotary Functions:

K1: Dim Panel



- ※ Short press: turn on/off LED controller
- ※ Long press: in the state of power on, long press to select the output frequency, F0.5=0.5K, F1.0=1.0K, F2.0=2.0K, F4.0=4.0K, F8.0=8.0K.
- ※ Adjust rotary: increase or decrease brightness, range from 1~100.

K2: CCT Panel



- ※ Short press: turn on/off LED controller
- ※ Long press: in the state of power on, long press to select the output frequency, F0.5=0.5K, F1.0=1.0K, F2.0=2.0K, F4.0=4.0K, F8.0=8.0K.
- ※ Double-click: switch between CCT mode and Dimming mode.
- ※ Adjust rotary: in dimming mode, increase or decrease brightness, range from 1~100; in CCT mode, adjust the color temperature, range from C0-C32.

K3: RGB Panel

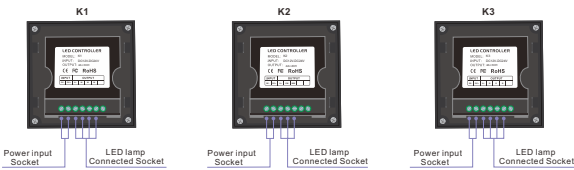


- ※ Short press: turn on/off LED controller
- ※ Long press: in the state of power on, long press to select the output frequency, F0.5=0.5K, F1.0=1.0K, F2.0=2.0K, F4.0=4.0K, F8.0=8.0K.
- ※ Double-click: switch between RGB mode and Dimming mode.
- ※ Adjust rotary: in dimming mode, increase or decrease brightness, range from 1~100; in RGB mode, adjust the RGB color, range from C01-C64.

Notice:

1. The digital tube is inactive if no settings are made after 1 minute, does not affect the output effect. Re-operate the rotary to turn it on.
2. Restore factory defaults: In the state of power off, long press the rotary and power on, after 0.5 second, release the rotary, the controller is on.

Green Block:



Wiring Diagram:

