

ShenZhen Suntech Company Limited

Product Specification

Product name: UCS512 Addressable White LED Strip

1. Product Picture:



2. Product Description

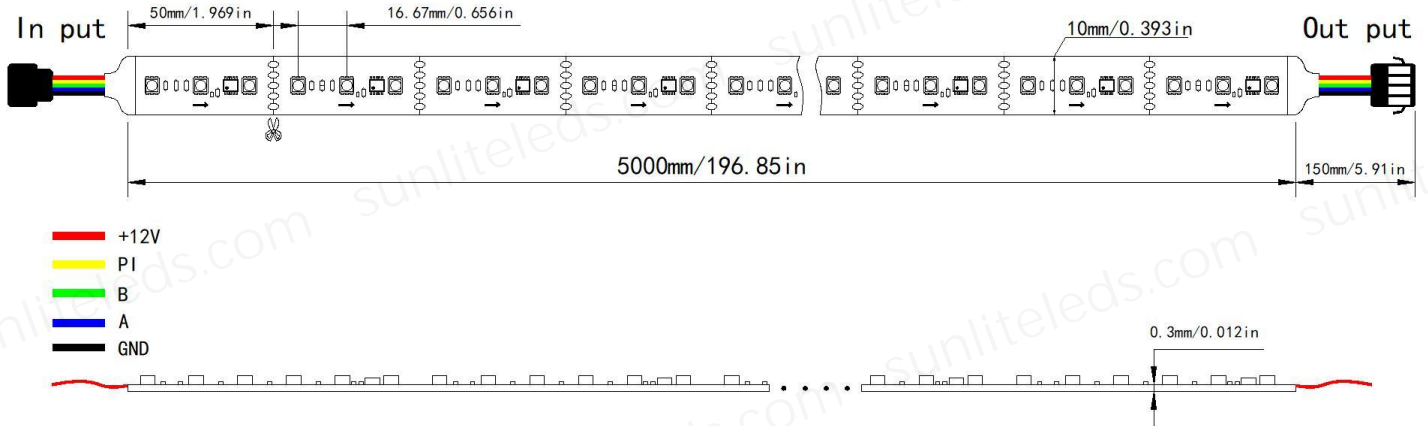
- (1) Personalized customization: Print your logo on the PCB, and do customized packages are acceptable.
- (2) Multi-selectivity: The color and width of PCB board could be selected. PCB thickness can be 2oz, 3oz. From IP20 to IP68 styles are all available, Suit for both indoor lighting and outdoor projects.
- (3) Easy installation: Self-adhesive 3M tape on back, it can be fixed on any dry and flat surface without any screws and clips.
- (4) Widely Application: It is widely used in wall corridor, indoor environment decoration, entertainment places, wine cabinet bar backlight, ceiling backlight, LED light box light source, LED luminous brand, aquarium supplies, car decoration and so on.
- (5) High quality: Long lifespan 50000 hours, 3 years warranty and 5 years warranty for options.

3.Product Dimension :

UCS512 DC12V/24V 60leds White 10mm width:

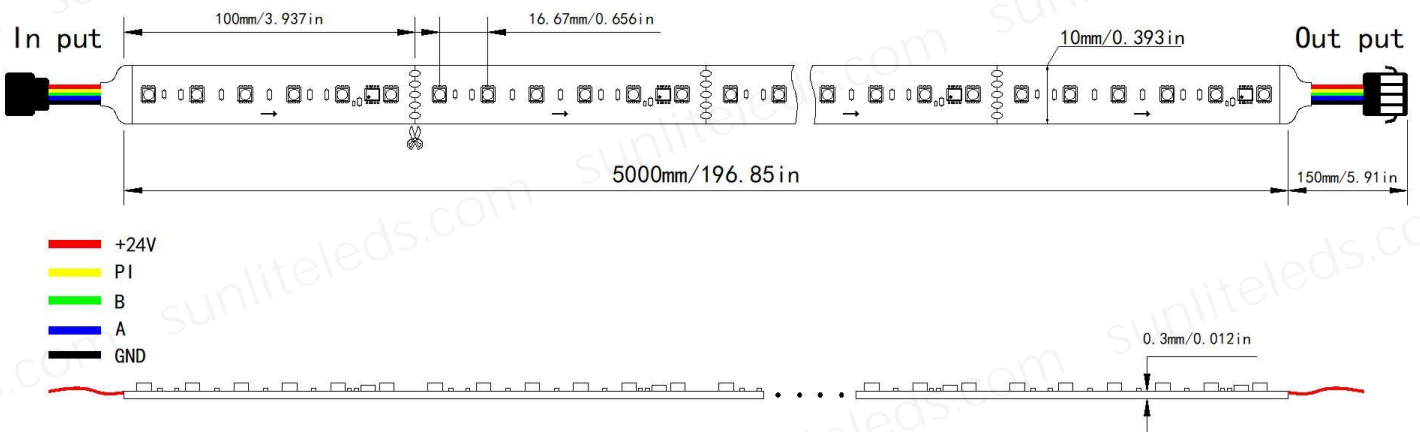
Dimension (unit: mm/in)

DC12V



Dimension (unit: mm/in)

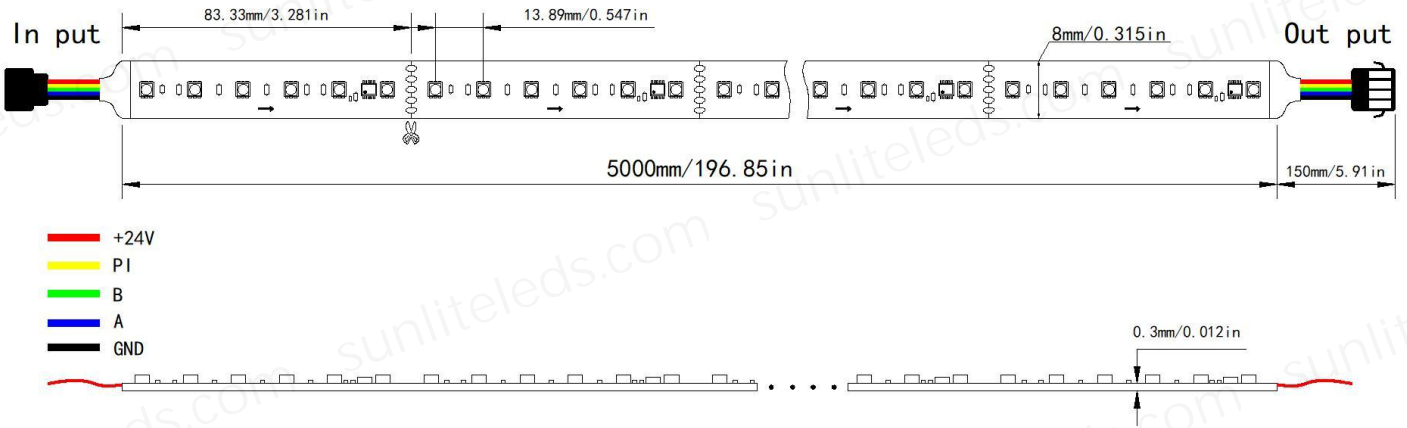
DC24V



UCS512 DC24V 72leds White 8 mm width:

Dimension (unit:mm/in)

DC24V



4. Product Specifications:

Item No	Voltage	Power Consumption	PCB Size	IP Rated	LED Qty	Color	Control Way	Break Continue
ST-DMX-5PIN-White-60-12V	DC12V	14.4W/M	5000*10*0.3mm	IP20/IP65/IP67	60leds/m	White	DMX	Yes
ST-DMX-5PIN-White-60-24V	DC24V	14.4W/M	5000*10*0.3mm	IP20/IP65/IP67	60leds/m	White	DMX	Yes
ST-DMX-5PIN-White-72-24V	DC24V	17.3W/M	5000*8*0.3mm	IP20/IP65/IP67	72leds/m	White	DMX	Yes

5. Production Application

It is widely used in wall corridor, indoor environment decoration, entertainment places, wine cabinet bar backlight, ceiling backlight, LED light box light source, LED luminous brand, aquarium supplies, car decoration and so on.

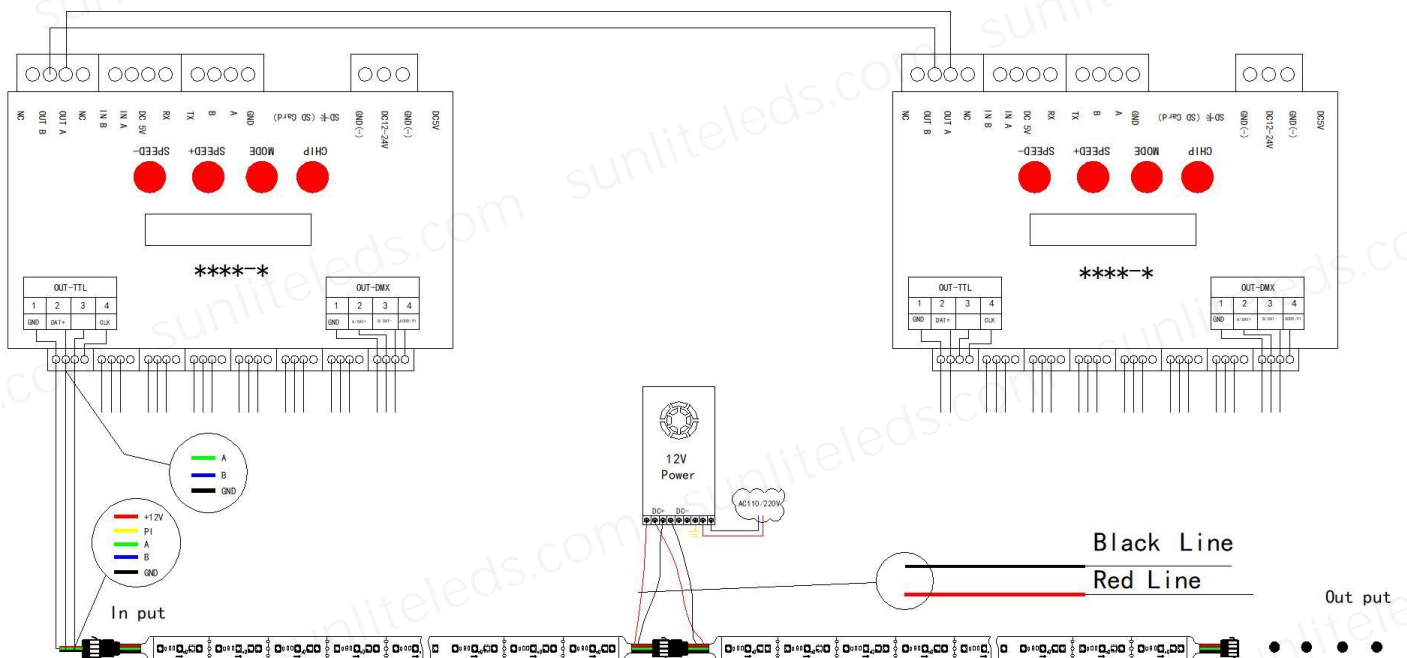


Video link:

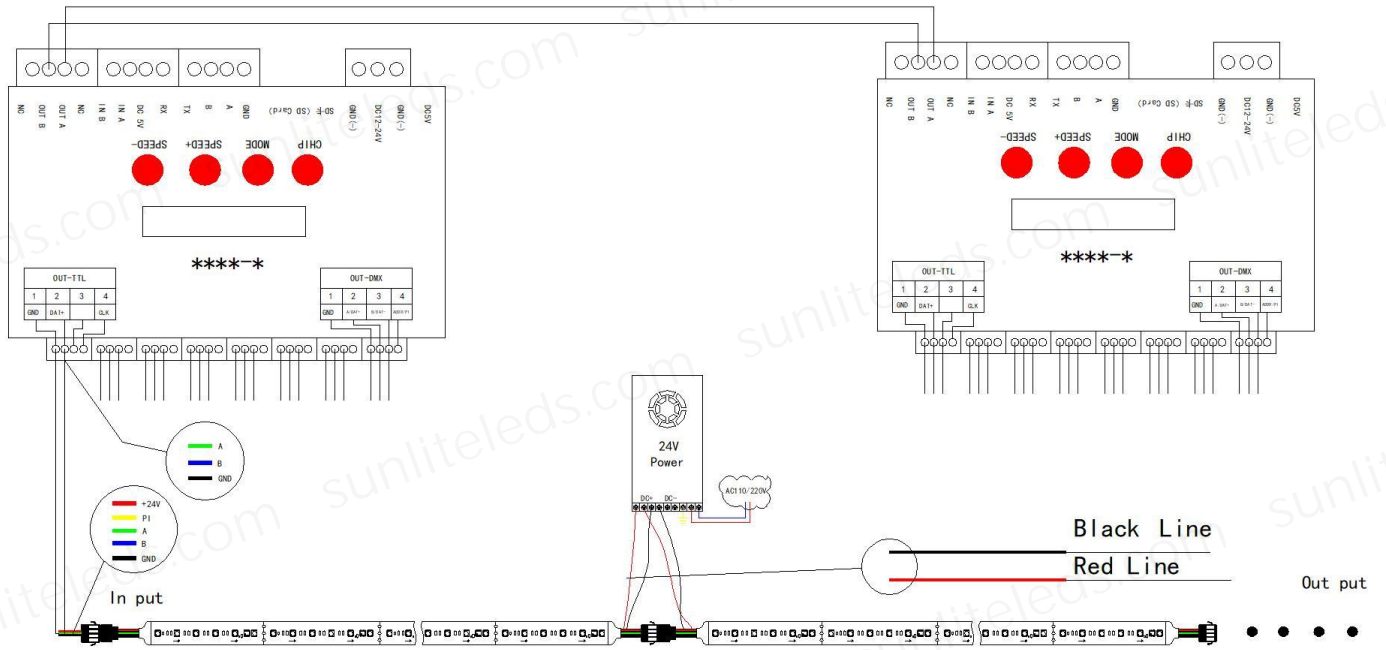
<https://www.youtube.com/watch?v=j2x7kMWbGRU>

6. Control Diagram and Installation Diagram

1. DC12V wiring diagram



2. DC24V wiring diagram



1. Madrix control

Recommended controller: T790K, YC3000

